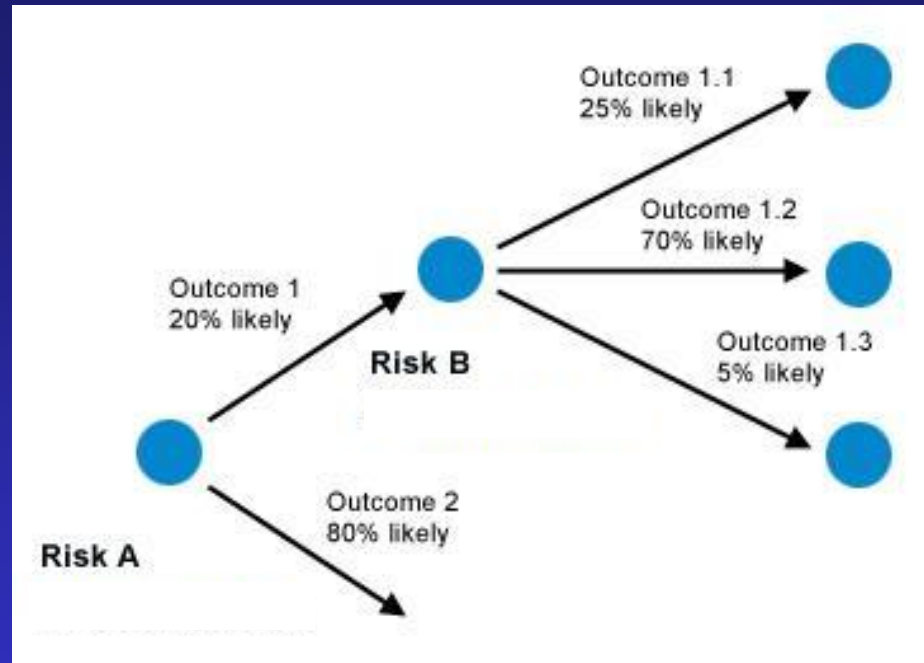


How Managers Make Decisions



Steve Robillard

Illinois Department of Natural Resources

November 5, 2011 - Workshop 2

This is a shared resource



FCO Guiding Principles

*To restore fish communities, based on foundations of **stable, self-sustaining stocks**, supplemented by judicious plantings of hatchery-reared fish, and provide from these communities an **optimum contribution of fish**, fishing opportunities and associated benefits to meet needs identified by society*

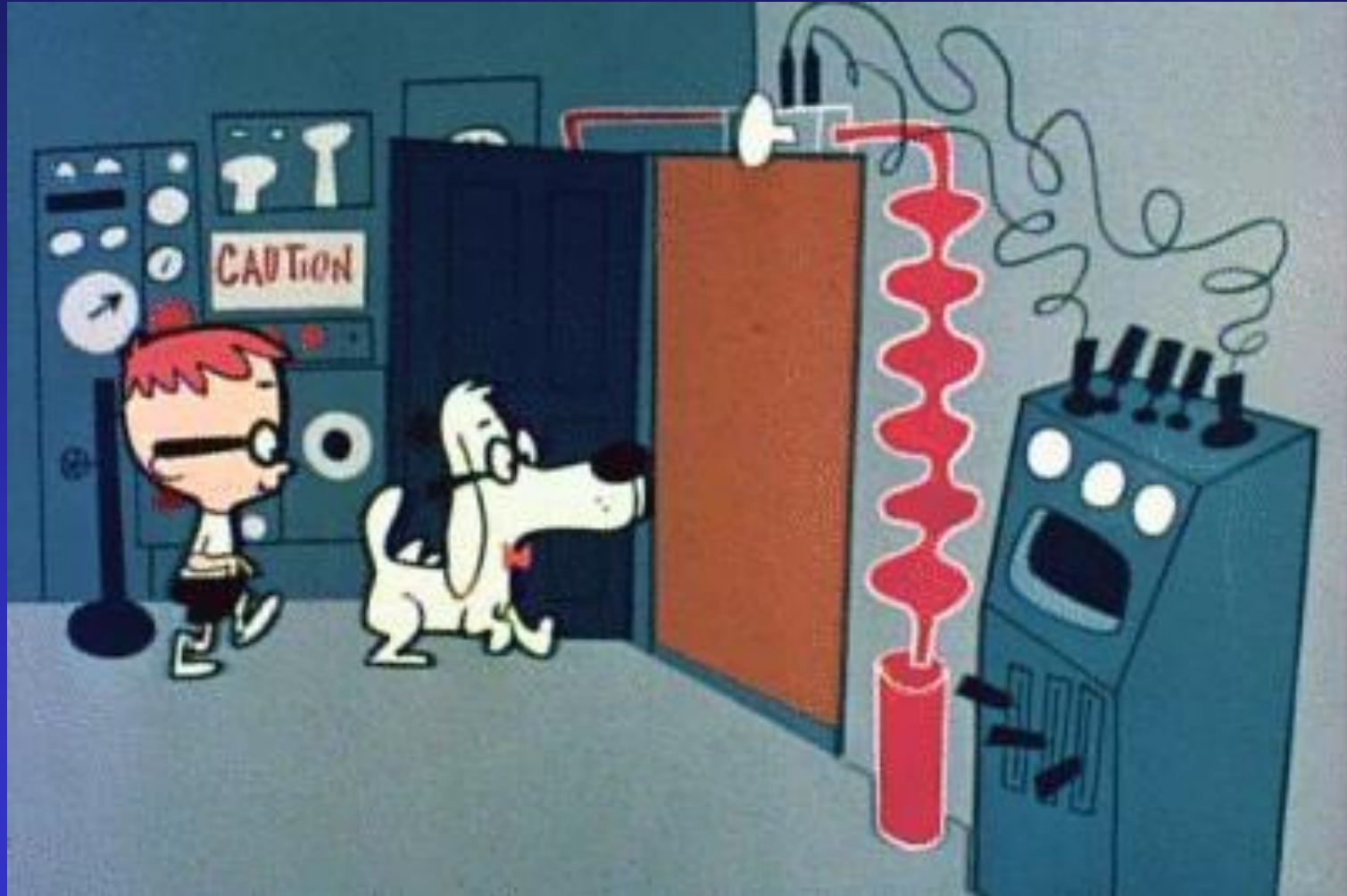
FCO Guiding Principles

Restore and maintain the biological integrity of the fish community so that production of desirable fish is sustainable and ecologically efficient.

Why we stock fish



Sherman, we're heading to 1900

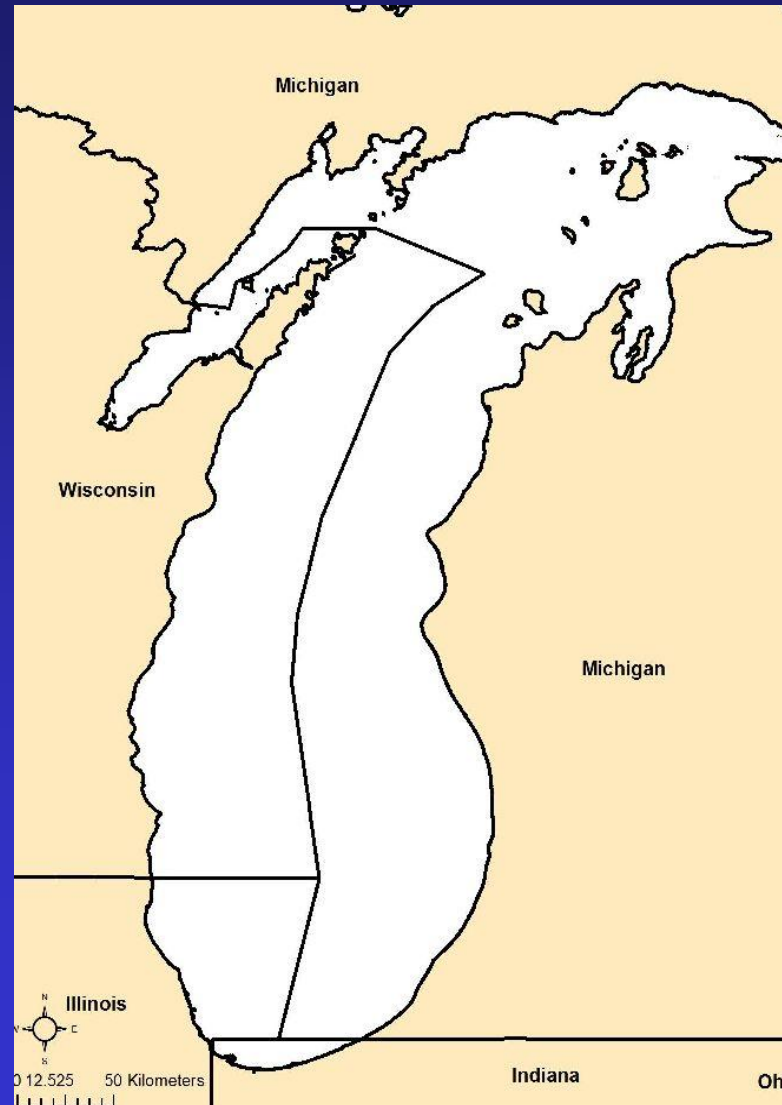


WABAC Machine: Rocky and Bullwinkle Show (ca.1961)

This isn't the same lake...



Fish don't obey state lines



There are competing interests



We try to maximize the fishery



Don't Spill the Beans: Hasbro corp.

Not all fish are created equal

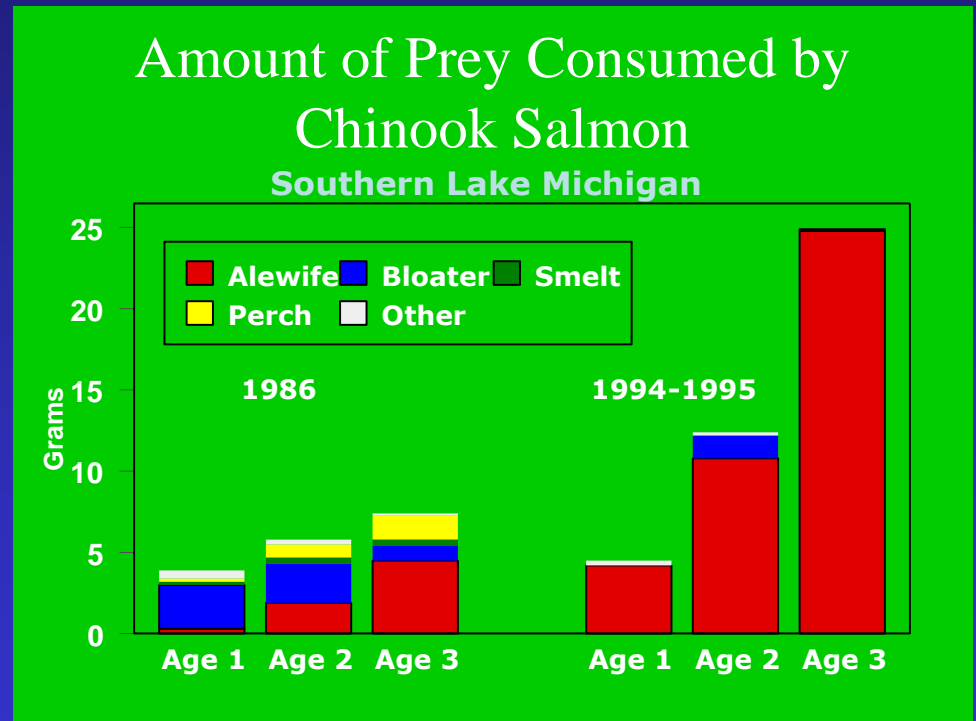
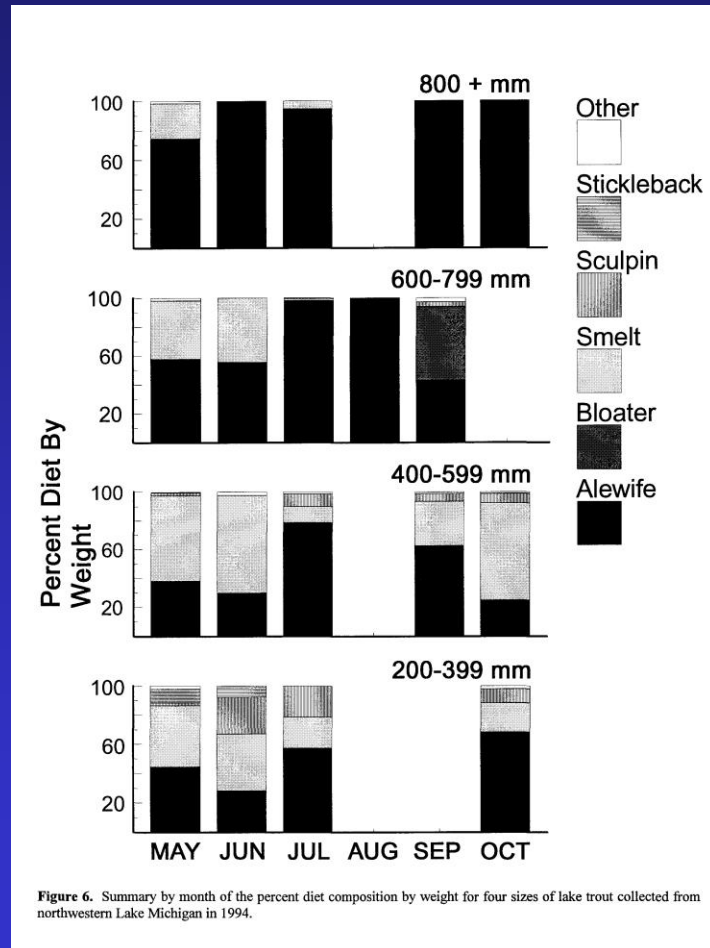
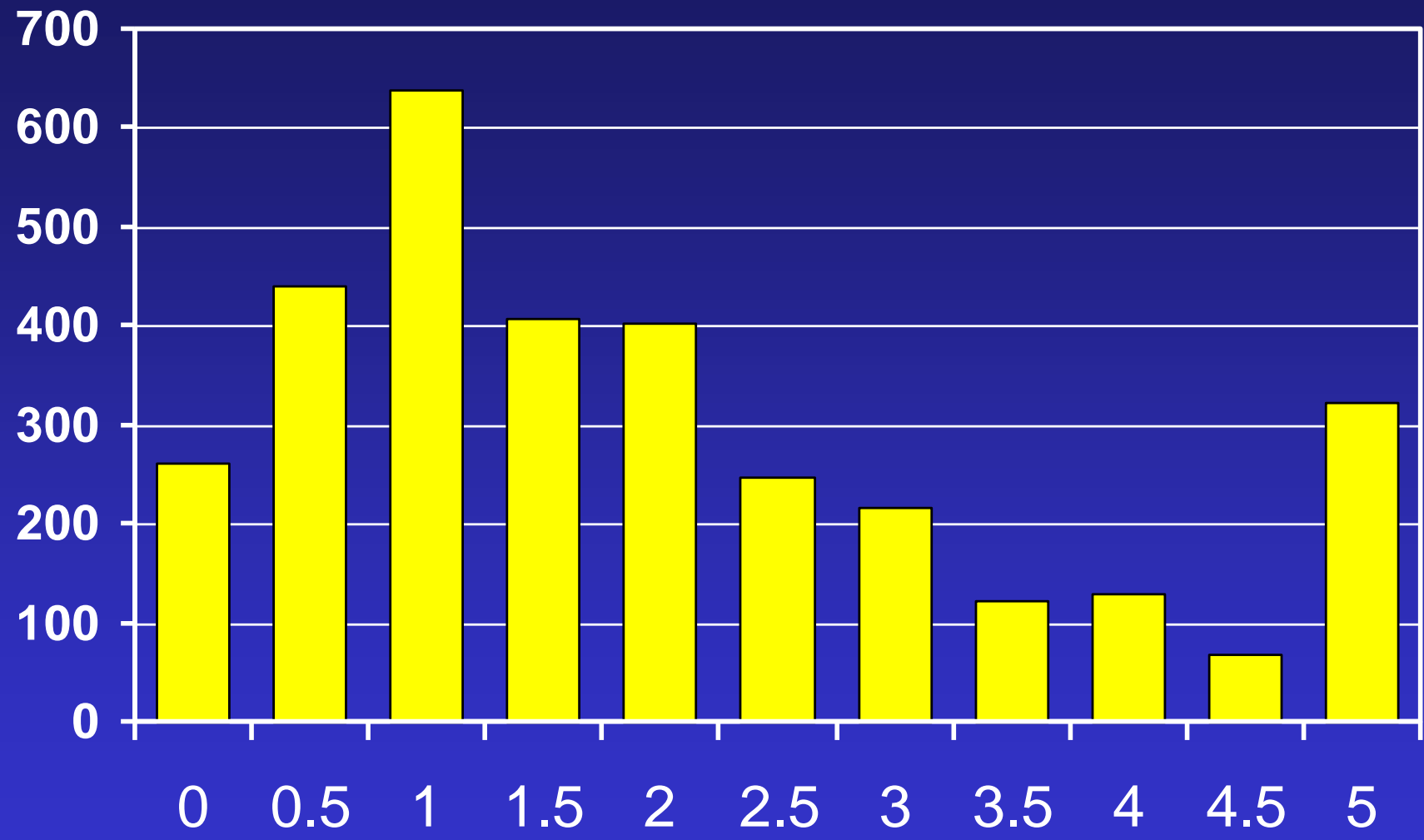


Figure 6. Summary by month of the percent diet composition by weight for four sizes of lake trout collected from northwestern Lake Michigan in 1994.

The 10% Rule



Fish per person

2009 IL charter boat harvest (3,250 trips)

There are trade-offs
in any decision



Informed decisions from incomplete information



Develop management strategies:

- that are agreeable to a diversity of anglers on a lakewide basis
- that foster biological stability
- that include a diverse species mix that may fully utilize the available forage
- that use available data to proactively address current condition of the lake
- to satisfy reasonable goals for the fishery.